

# L-FY Studio

# PLANNING 2025 ECOLE DE DANSE

## MERCREDI

13H30-14H30  
STREET JAZZ  
ENFANTS

14H30-15H30  
CONTEMPORAINE  
ENFANTS

15H30-16H30  
STREET JAZZ  
NIV 2

16H30-17H30  
AFRO FUSION  
NIV 1 & 2  
RENÉ FARNESI & BELLY SID

14H-15H  
MODERNE EVEIL  
(5-8 ANS)  
REINE SID

15H30-16H30  
ACRO DANCE  
JERRY VITAL

16H15-17H15  
BARRE AU SOL

INFORMATIONS &  
INSCRIPTIONS

L-FY STUDIO  
ANALAMAHIYSY

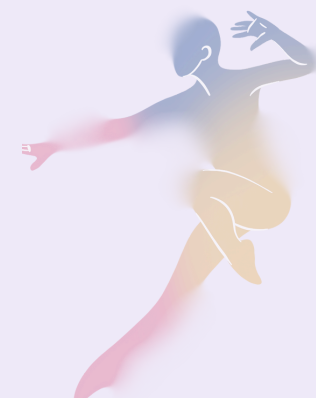
+261 33 14 461 96

[www.lfystudio.com](http://www.lfystudio.com)

2 Salles

Niv 1: Déb/Inter

Niv 2: Inter/Avancé



## VENDREDI

09H-10H  
CLASSIQUE  
(8-12 ANS)

10H-11H  
MODERNE  
(8-12 ANS)

11H15-12H15  
CLASSIQUE  
(5-8 ANS)

12H30-13H30  
AFRO DANCEHALL  
NIV 2  
MAMPIANDRA

13H30-14H30  
CONTEMPORAINE  
NIV 1 & 2  
JERRY VITAL

14H45-16H  
PERFECT YOUR DANCE  
NIV 2

09H-10H  
HIP-HOP BOYS  
NIV 1 & 2  
FANDRESENA

10H-11H  
STREET JAZZ  
ENFANTS  
REINE SID

11H15-12H15  
HIP-HOP GIRLY  
NIV 1  
REINE SID

12H30-13H30  
ACRO DANCE  
JERRY VITAL

16H15-17H15  
WOMEN'S DANCE TOGETHER  
DANCEHALL FEMALE / HEELS

ENFANTS

ADO & ADULTES

ADULTES





# L-FY Studio

# PLANNING 2025 STUDIO DE PILATES



**MARDI**

08H-09H  
PILATES MAT

12H30-13H30  
PILATES REFORMER

17H30-18H30  
PILATES MAT

**MERCREDI**

09H-10H  
PILATES MAT +  
BARREL



**JEUDI**

08H-09H  
PILATES MAT

12H15-13H15  
PILATES STEP  
BARREL

13H30-14H30  
PILATES REFORMER

**VENDREDI**

11H-12H  
PILATES REFORMER

12H15-13H15  
PILATES MAT +  
BARREL

14h45-15H45  
PILATES REFORMER

16H15-17H15  
BARRE AU SOL



**SAMEDI**

13H30-14H30  
PILATES STEP  
BARREL

13H30-14H30  
CONTEMPORAINE  
NIV 1 & 2

16H15-17H15  
WOMEN'S DANCE TOGETHER  
DANCEHALL FEMALE / HEELS

INFORMATIONS &  
INSCRIPTIONS

L-FY STUDIO  
ANALAMAHI SY

Whatsapp  
+261 33 14 461 96

[www.lfystudio.com](http://www.lfystudio.com)